

LAKEVIEW BY PEPPERSMASH

4847 MAIN STREET | THE COLONY



TABLE OF CONTENTS

- Executive Summary 3
- Investment Overview | Opportunity 4
- Location Map 5
- Aerial 6
- Property Overview 7
 - Property Description 8
 - Lease Summary 9
 - Tenant Overview 10
- Market Overview 11
 - The Colony 12
 - Photos 13
 - Demographics 16
 - Texas by the Numbers 17
- Disclaimer 18

EXECUTIVE SUMMARY



Tenant	Peppersmash
Address	4847 Main Street, The Colony 76056
Purchase Price	\$2,500,000
NOI	\$164,004
Cap Rate	6.56%
Lease Term	10 Years
Lease Start	11/01/2019
Lease Expiration	10/31/2029

Weitzman is pleased to offer to qualified investors the opportunity to acquire a generational piece of real estate occupied by Lakeview by Peppersmash (“Peppersmash”). Peppersmash recently signed a 10-year lease with two (2) five (5) year options to extend. The lease generates an annual rental income of \$164,004 throughout its term, along with additional income of percentage rent of 6% upon annual sales reaching \$1.5M. The lease is a NNN lease, one of the safest types of real estate ownership, creating stable and passive income streams for an investor.

The property is situated on approximately 80,930 square feet, or 1.858 acres, of land in one of the highest barrier-to-entry trade areas in Dallas-Fort Worth. Peppersmash is strategically located on Main Street-FM 423 in The Colony, less than 1.5 miles away from Topgolf, Nebraska Furniture Mart, and “Grandscape”, a master-planned development under construction that will be one of the largest and most unique mixed-use projects in the country with over 400+ acres and 3 million SF of retail, entertainment, dining, residential, and office attractions.

INVESTMENT OVERVIEW | OPPORTUNITY

Long Term, NNN Lease – New 10-year base lease term with options | Zero landlord responsibilities | Percentage Rent

Experienced Operator – Owner/operator with 30+ years of experience managing national-branded restaurants| Subject is the 2nd location under the Peppersmash Brand

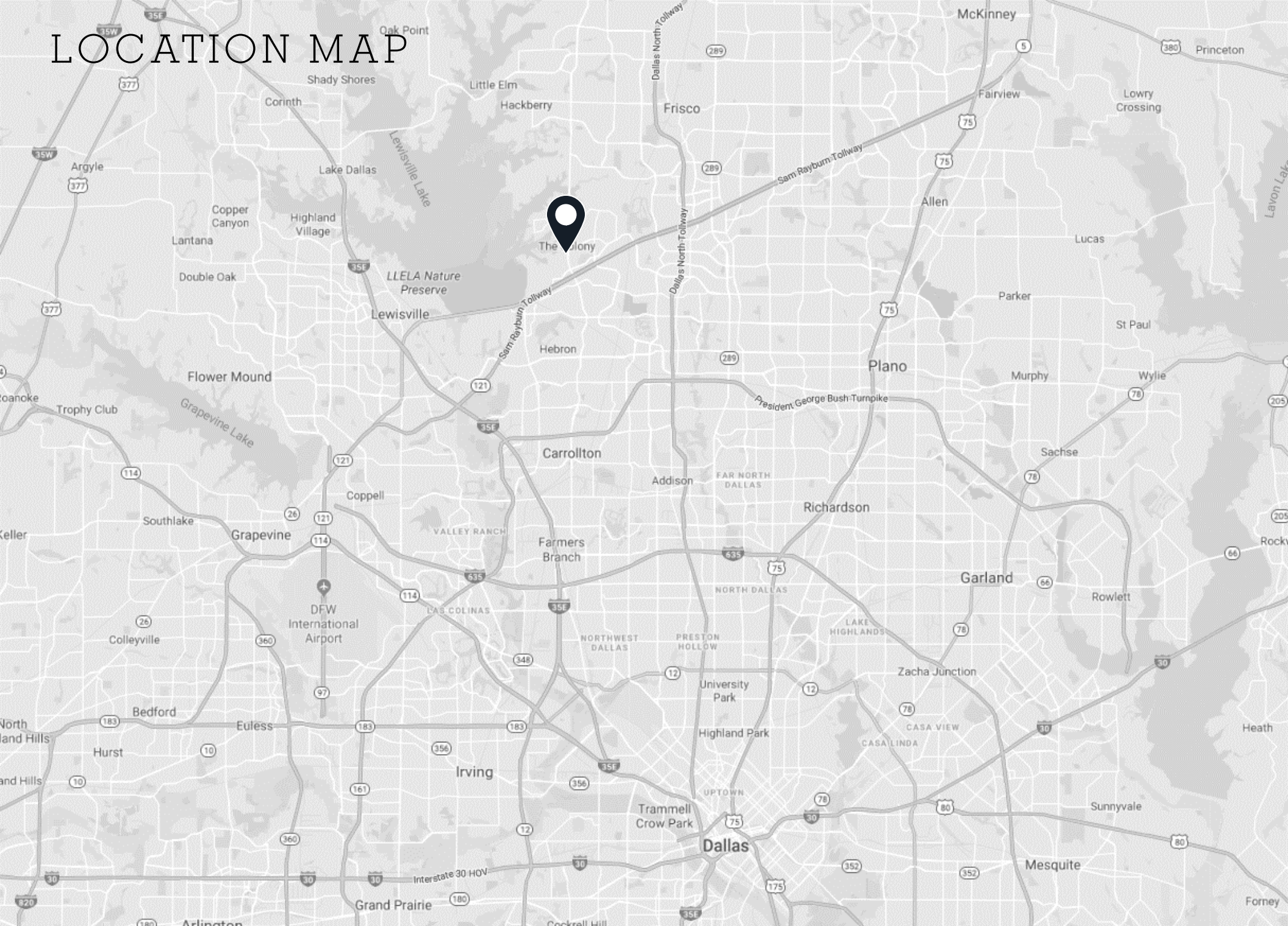
Extremely Dense Retail Corridor– Location offers excellent combination of high population, dense residential housing, affluent local demographic, and national credit operators

High Visibility and Traffic – Located on Main Street approximately 1 mile North of SH-121 (162,829 VPD) | Monument Signage | Patio Overlooking Beautiful Lake Lewisville

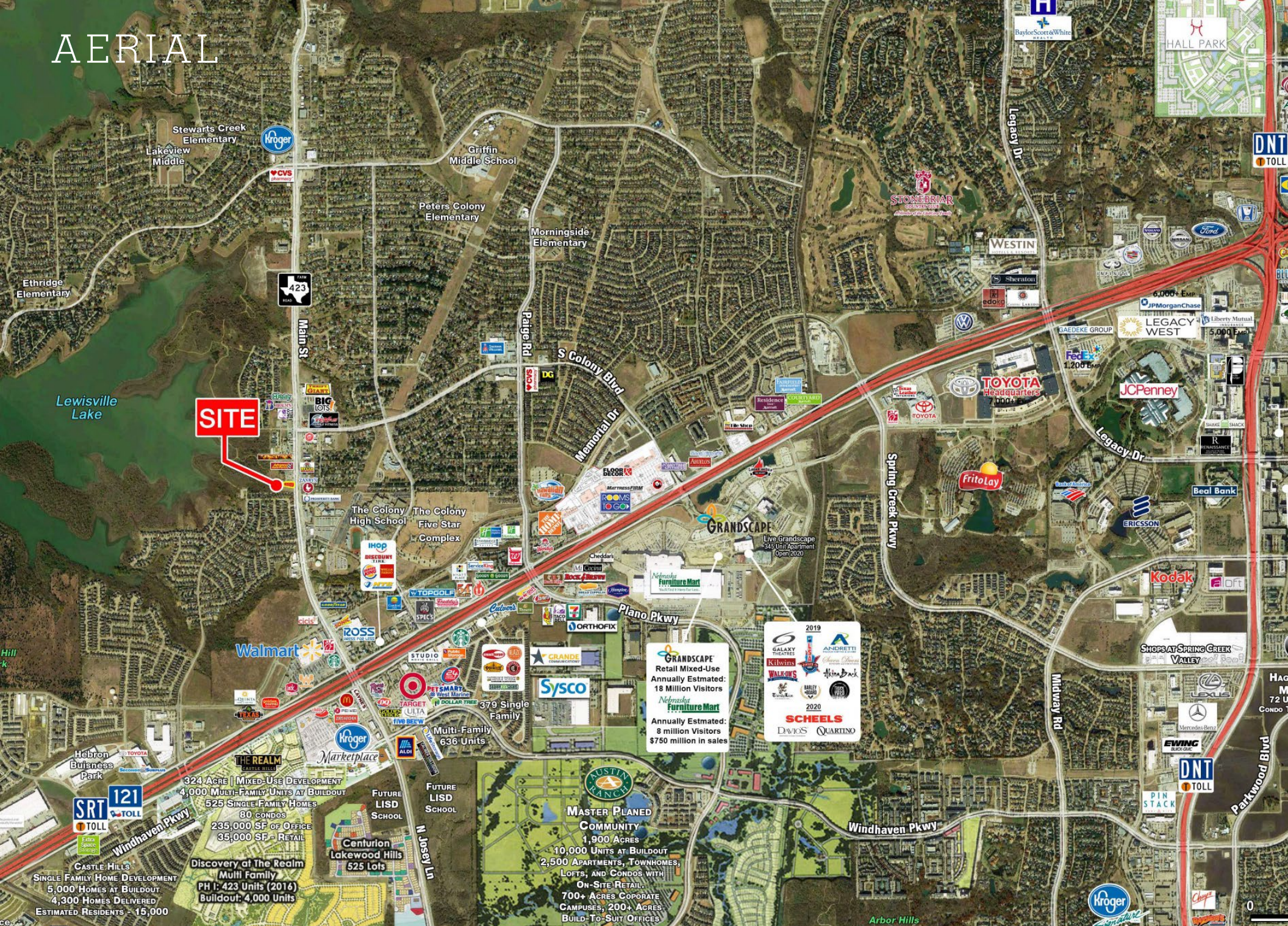
Uniquely Positioned Within Growing Market - Minutes from “Grandscape”, a 3-million SF master planned development, Top Golf, & Nebraska Furniture Mart, New headquarters for Fed Ex, Liberty Mutual, Toyota, and JP Morgan Chase all within close proximity



LOCATION MAP



AERIAL



SITE

GRANDSCAPE
Retail Mixed-Use
Annually Estimated:
18 Million Visitors

Nebraska Furniture Mart
Annually Estimated:
8 million Visitors
\$750 million in sales

- 2019
- ANDRETTI
 - Galaxy Theatres
 - Kilwins
 - Walkways
 - HillBack
 - Barley House
 - 2020
 - SCHEELS
 - Dinos
 - Quarmino

324 Acre | Mixed-Use Development
4,000 Multi-Family Units at Buildout
525 Single-Family Homes
80 Condos
235,000 SF of Office
35,000 SF - Retail

Discovery at The Realm
Multi Family
PH I: 423 Units (2016)
Buildout: 4,000 Units

MASTERS PLANNED COMMUNITY
1,900 ACRES
10,000 UNITS AT BUILDOUT
2,500 APARTMENTS, TOWNHOMES,
LOFTS, AND CONDOS WITH
ON-SITE RETAIL
700+ ACRES CORPORATE
CAMPUSES, 200+ ACRES
BUILD-TO-SUIT OFFICES

PROPERTY OVERVIEW



PROPERTY DESCRIPTION

Address:	4847 Main Street, The Colony, TX 76056
Land Size:	1.86 Acres
Access:	Signaled Intersection on Main Street
Signage:	Building Signage
Building Size:	4,220 SF plus 2,800 SF patio
Year of Construction:	2000/2019
Parking:	63 Spaces
Drive Area:	Concrete Pavement, Concrete Curbs
Zoning:	General Retail (GR)
Traffic Counts:	Main Street - 42,420 vpd Sam Rayburn Tollway (SH-121) - 162,829 vpd



LEASE SUMMARY



Tenant Name:	Peppersmash Lakeview Kitchen, LLC, a Texas limited liability company
DBA:	Lakeview by Peppersmash
Lease Start:	November 1, 2019
Lease Expiration:	October 31, 2029
Lease Type:	NNN
Landlord Responsibilities:	None
Base Lease Term:	10 Years
Renewal Options:	Two (2) Five (5) Year Options
Annual Base Rent:	January 2020 – June 2020 (\$10,000/mo) July 2020 – October 2029 (\$13,667/mo)
Annual Option Rent:	Market
Right of First Offer:	14 Days

TENANT OVERVIEW

Peppersmash is a popular scratch-kitchen concept offering an array of cocktail and other specialized beverages pairing with a robust menu of food. The tenant and operator of the restaurant partnered in 2001 with the founding of Chalak Mitra Group (CMG), a real estate consulting group. The CEO of CMG held the role of CEO for Genghis Grill for 10 years from 2004-2014. Today, the group operates 147 KFC/Taco Bells, 5 La Madeleines, 79 Genghis Grills, 12 Elephant Bars, 5 Fireside Pies, 4 Ruby Tequila's Mexican Kitchens, and 2 Peppersmashes. Prior to assisting in the development of CMG, the Peppersmash owner/operator also engaged in the 2004 inception of Genghis Grill Franchise Concepts, LP, a company implemented to anchor the success in proper franchise development for the Genghis Grill brand.



MARKET OVERVIEW



THE COLONY

The Colony, is a city in Denton County and a suburb of Dallas. The Colony, City by the Lake, sits on 15.7 square miles filled with outdoor adventure, live entertainment, retail shopping, unique restaurant and bar amenities. The City by the Lake, with its strikingly beautiful views of Lewisville Lake, extends 23 miles along its eastern shoreline.

Only 20 miles north of Dallas, The Colony is in the southeast corner of Denton County along the impressively ever-growing, commercial SH-121 Corridor, the Sam Rayburn Tollway, which includes the newly opened US Headquarters of Toyota USA that is within two miles of The Colony. The Colony's closest neighbors are Plano, Lewisville, Little Elm, Carrollton, and Frisco. It is a short 15 minute drive to Dallas Fort Worth International Airport and only 25 minutes to Dallas Love Field Airport.

The Colony has ever-expanding, year-round entertainment and attractions to please the entire family and visitors as well as business travelers, including outdoor adventures, top-ranked golf courses, unique bay golf, water parks, live entertainment venues, sports facilities, event spaces, vibrant nightlife, new hotels and beautiful shoreline amenities. The city is home to Pizza Inn's corporate headquarters as well as an Edward Don & Company distribution center and a variety of small and medium-sized businesses. The Grandscape development, is driving on SH-121, a new development boom to the city.

Grandscape is described as one of the largest and most unique mixed-use real estate developments in the country. Recognized in 2018 by D CEO's Commercial Real Estate Awards as the 'Best Mixed-Use Project' in North Texas. Found in Grandscape are unique and exciting options such as live entertainment, deliciously sensational restaurant offerings and world-renowned chefs, vibrant nightlight, lodging and includes the U.S.'s largest retail furniture store, Nebraska Furniture Mart of Texas, all which draw visitors from all over the United States and World.

The Cascades is a 110-acre development fronting SH 121 and is a Jackson-Shaw master-planned community mixing residential, mid-sized tenant service with complimentary selections of hospitality, restaurant, retail and social venues.



THE COLONY

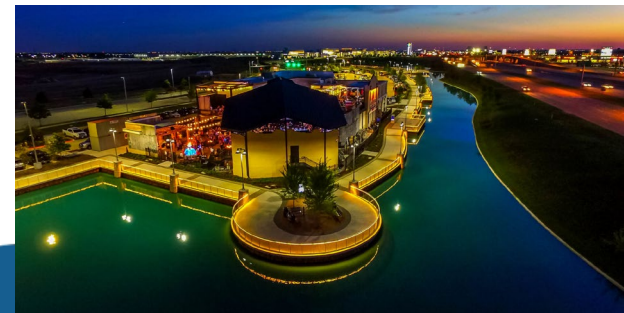
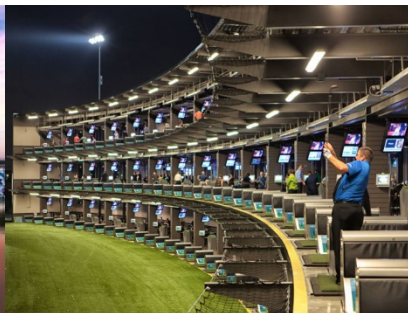
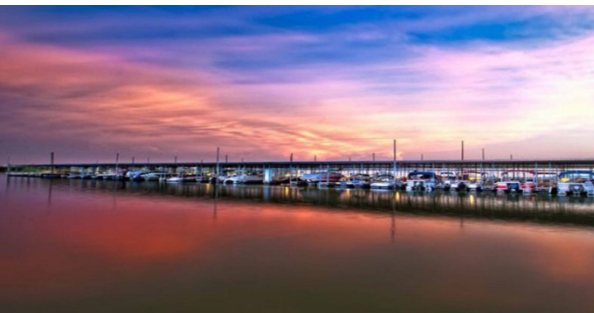
The Colony offers some of the best known golf courses in North Texas, The Tribute and The Old American. The Tribute is a 1,600-acre master planned lakeside golf and resort community on a peninsula on Lake Lewisville, unlike any other in North Texas. The Old American was recently named Golf Magazine's No. 5 'Best Public Golf Course' in Texas, making it the highest ranked course in the Metroplex.

Austin Ranch is a master planned community one mile west of the Dallas North Tollway and includes apartments, luxury homes, retails and corporate campuses.

The Colony is part of the award-winning Lewisville Independent School District and Little Elm Independent School District which services The Tribute neighborhood. In The Colony proper, there are six elementary schools, two middle schools and one high school under L.I.S.D. leadership and an elementary STEM school within the Little Elm I.S.D. The Colony students consistently are recognized for their excellence in academics, arts, and athletics. Higher education opportunities are available at numerous colleges and universities in North Texas, including the University of North Texas, Southern Methodist University, Texas Women's University, North Central Texas College, University of Texas at Dallas and Collin College.

The Colony's commitment to find creative and resourceful ways to enhance sports and the quality of life for the entire community was demonstrated when named #1 Sportstown for the State of Texas by Sports Illustrated Magazine and the National Parks and Recreation Association. The Colony is home to Blue Sky Sports Complex and Five Star Complex. Blue Sky Sports Complex, located on more than 56 acres of park land along Lewisville Lake, this indoor / outdoor sports complex offers two indoor soccer fields used for youth and adult soccer leagues, various camps, clinics and flag football. Three full-size outdoor soccer fields equipped with lights are used for games, practices, camps and tournaments. Five Star Complex is an 80-acre state-of-the-art sports facility built in 2003 is home to five baseball fields, eight soccer fields, two football fields, six flag football fields and two softball fields. The complex can also accommodate lacrosse, rugby and ultimate frisbee tournaments.

The Colony also features 28 parks with over 3,000 acres, one of the highest acres of parks per capita in the state. Creative agreements with the city and U.S Army Corps of Engineers led to an award-winning trail system that winds through acres of wildlife management areas along the shoreline of Lewisville Lake.



PHOTOS



PHOTOS

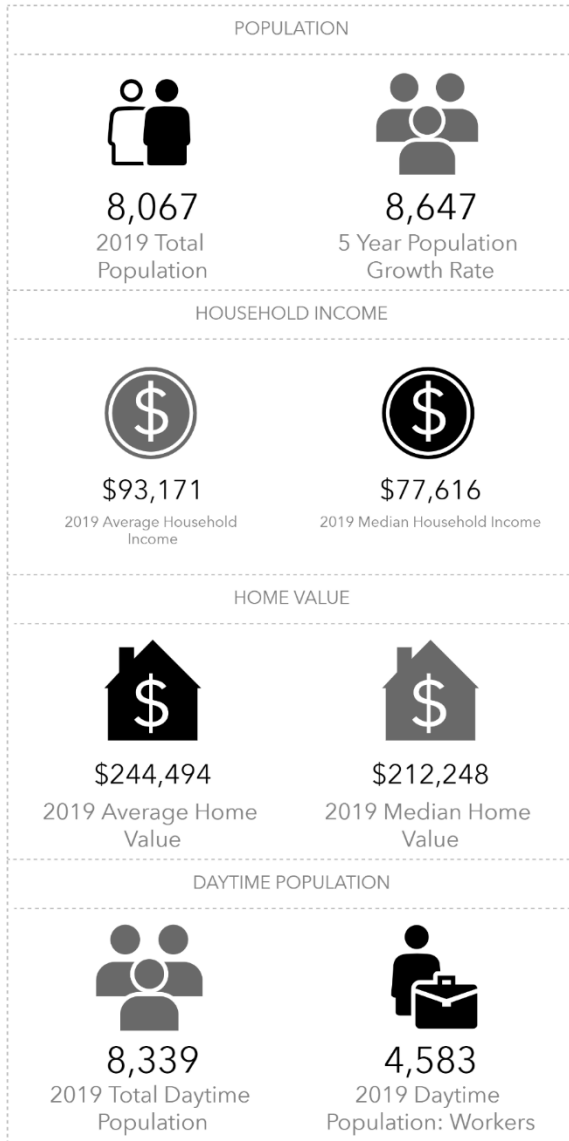


PHOTOS

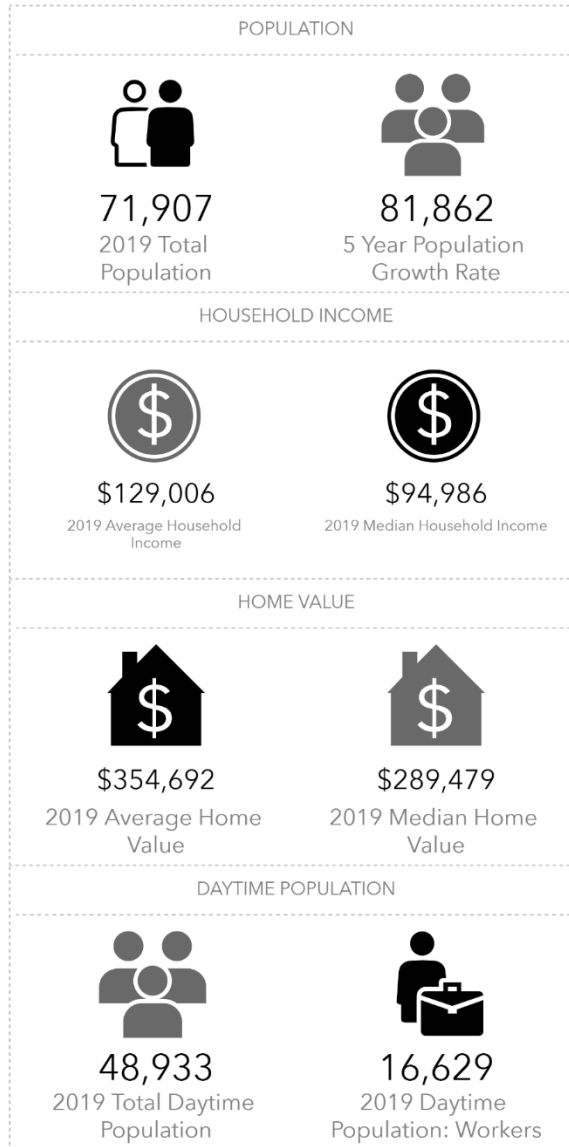


DEMOGRAPHICS

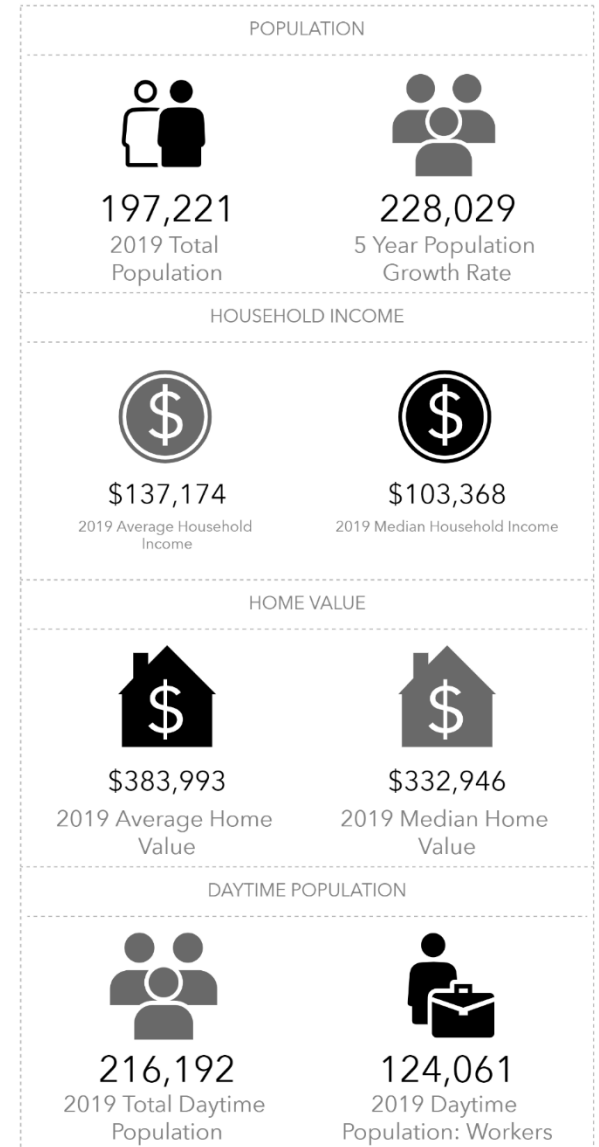
1 MILE



3 MILES



5 MILES



TEXAS | BY THE NUMBERS



TEXAS NAMED
“**BEST PLACE TO LIVE IN AMERICA IN 2018**”

Money.com



STATE FOR BUSINESS 2018

CNBC



#1

STATE WITH THE BEST
INFRASTRUCTURE 2018

CNBC



#1 TEXAS HAS OUTPACED
THE NATION FOR JOB
GROWTH IN 2017

Austin Business Journal

#2 TOP STATE TO
FIND A JOB IN
AMERICA

CNBC

Texas adds
+1,000 NEW RESIDENTS

every day

399,737

NEW RESIDENTS IN 2018

Dallasnews.com



This real estate presentation has been prepared for information purposes only, and does not purport to contain all the information necessary to reach a purchase decision for the property described herein (the "Property"). The information contained herein (the "Information") has been carefully compiled, but not independently verified by the Seller or Weitzman, and there is no representation, warranty or guarantee whatsoever as to its completeness or accuracy.

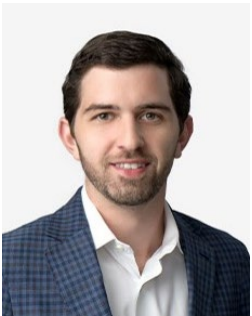
Any potential Purchaser shall rely entirely on its own information, judgment and inspection of the Property and its records, and neither the Seller nor Weitzman assume any liability whatsoever for errors or omissions in the Information or any other data provided in connection with the Property. Each potential Purchaser and any party related thereto agrees that neither Seller nor Weitzman shall have any liability for any reason, whether for negligence or gross negligence, from the use of the Information by any person in connection with the purchase of or any other investment in the Property by a Purchaser or any other party related thereto.

Neither the Seller nor Weitzman has any liability whatsoever for any oral or written representations, warranties or agreements relating to the Property except as expressly set forth by any such party in any contract of sale executed in connection with the Property.

This presentation is subject to changes by the Seller as to price or terms, to prior sale, to withdrawal of the Property from the market, and other events beyond the control of the Seller and Weitzman.

Weitzman is the trade name of Weitzman Management Corporation, a regional realty corporation.

CONTACTS:



Corbin Tanenbaum
Associate

ctanenbaum@weitzmangroup.com

T 214.442.7506

M 504.638.2749



Scott Smith
Associate

ssmith@weitzmangroup.com

T 214.720.3663

M 817.719.7679

PRESENTED BY

weitzman[®]

3102 MAPLE AVENUE | SUITE 350 | DALLAS, TEXAS 75201

O: 214.954.0600 | F: 214.953.0860

WEITZMANGROUP.COM

The information was obtained from sources deemed reliable; however, Weitzman has not verified it and makes no guarantees, warranties or representations as to the completeness or accuracy thereof. The presentation of this real estate information is subject to errors; omissions; change of price; prior sale or lease, or withdrawal without notice. You and your advisors should conduct a careful independent investigation of the property to determine if it is suitable for your intended purpose.